



**5**  
axis

# SINTEX



## SINTEX 75 - 100 - 125

Excellent quality-price ratio

Page 5



## SINTEX 75 - 100 - 125

Accessories and Spare Parts

- Interface plate

Page 10



## SINTEX 75

Page 6



## Clamping Pins

Accessories

- For APS 140 and APS 190

Page 11



## SINTEX 100

Page 7



## Pallet for Automation

Accessories

- For APS 140 and APS 190

Page 12



## SINTEX 125

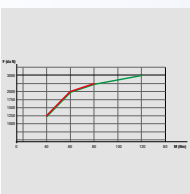
Page 8



## SINTEX 75 - 100 - 125

Accessories and Spare Parts

Page 14



## SINTEX 75 - 100 - 125

Technical Data

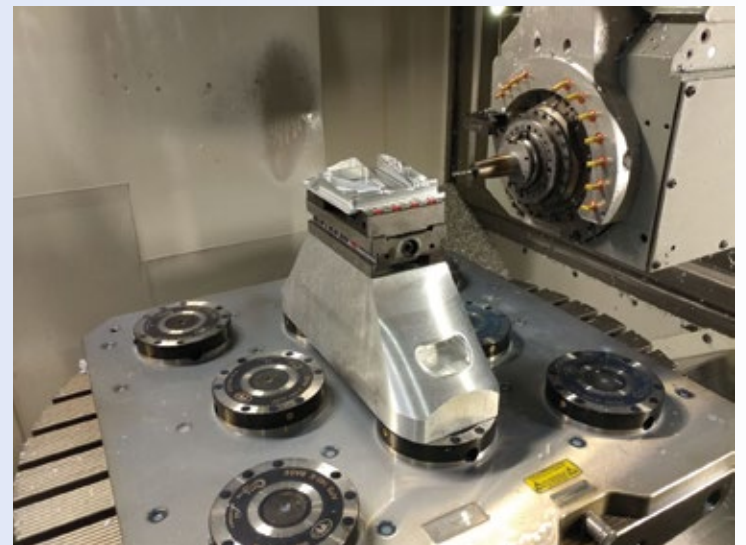
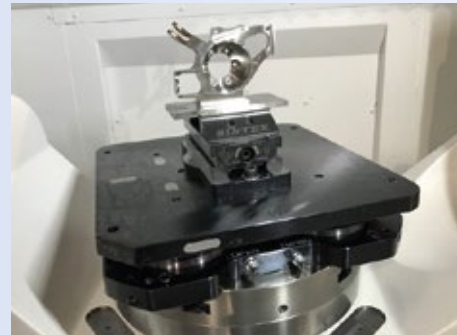
Page 9



## SINTEX 75 - 100 - 125

- SinterGrip

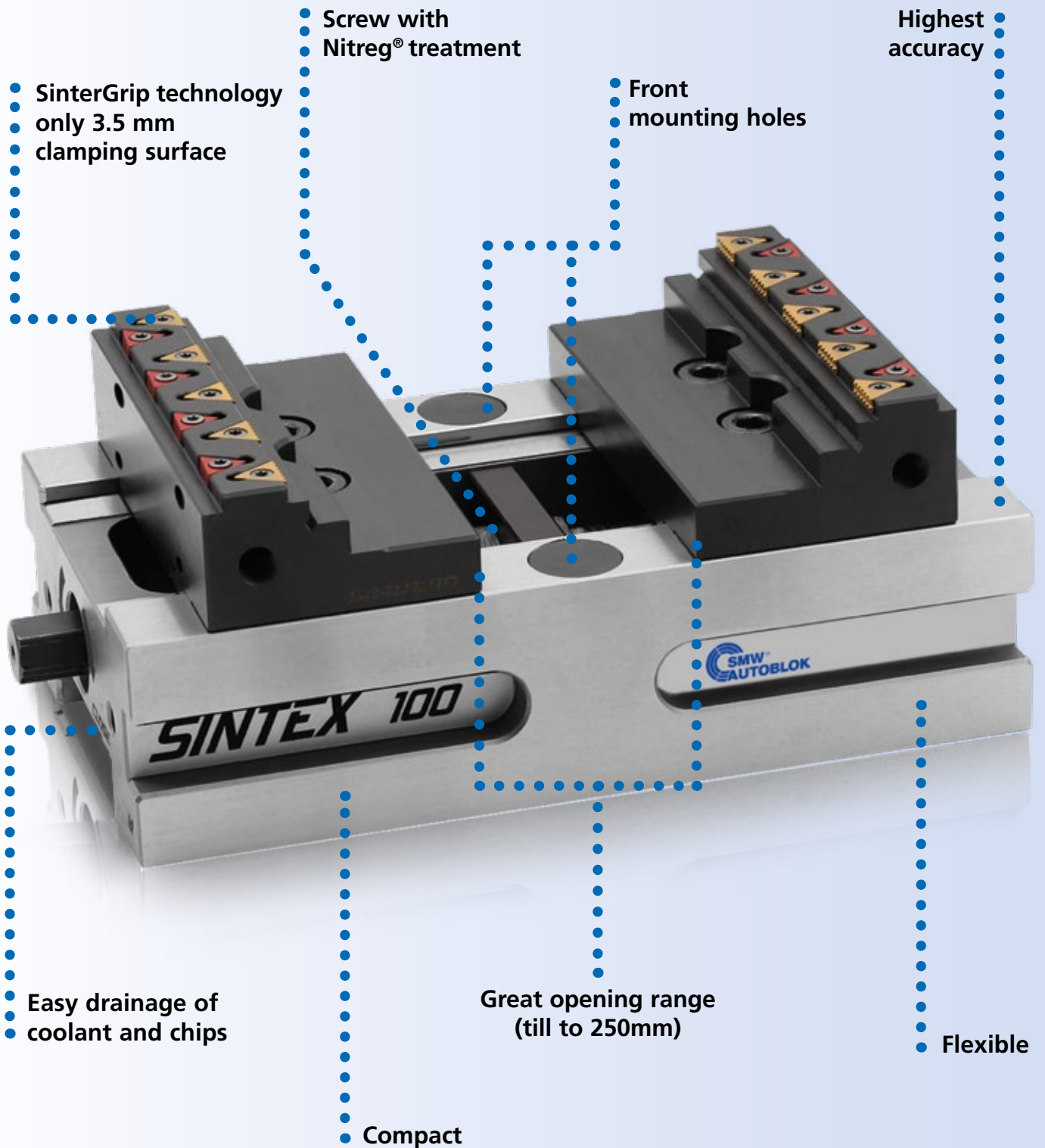
Page 18



**5**  
axis



# SINTEX



# SINTEX 75

PREMIUM



## Applications / Customer Benefits

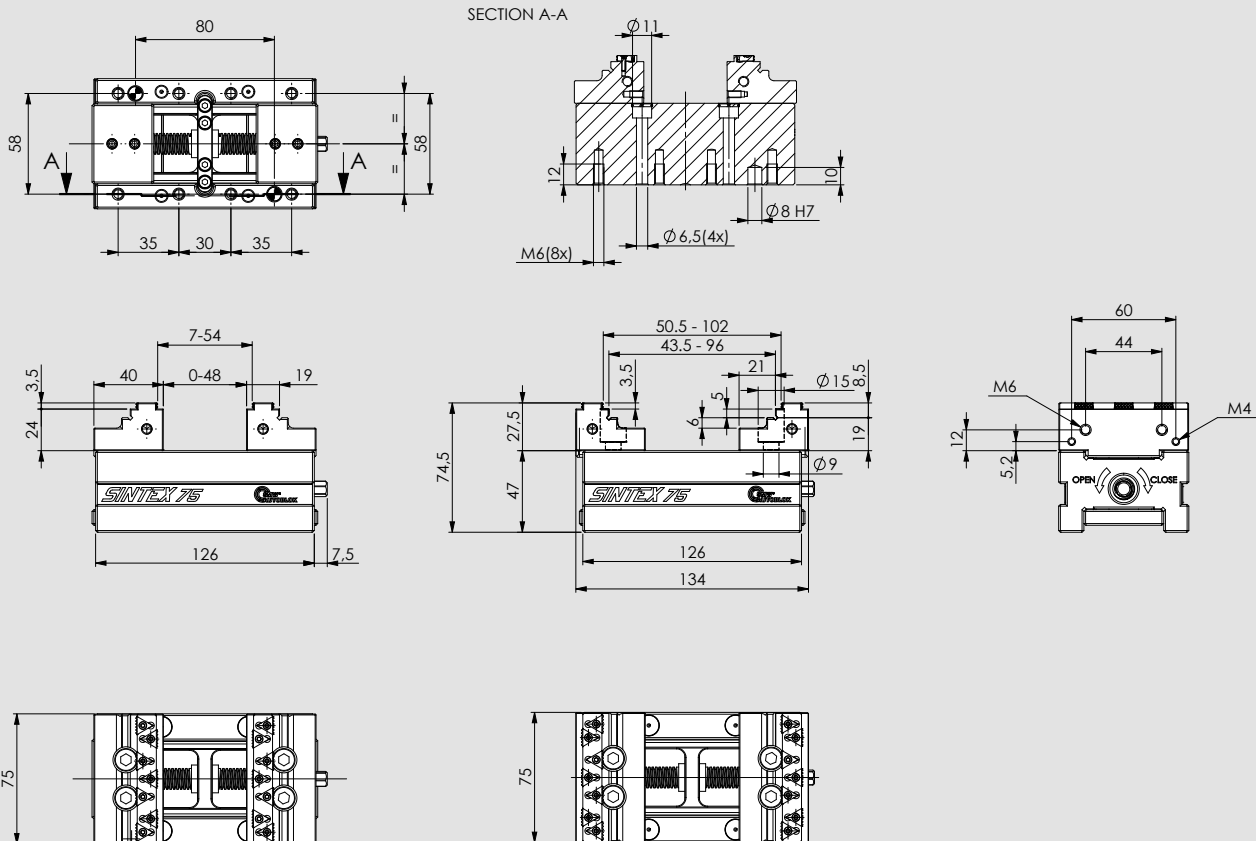
- Highly precise self-centering clamping with maximum repeatability
- Compact design for better accessibility and very large drainage slots
- Jaws with SinterGrip clamping inserts for minimum workpiece clamping depth without pre-machining
- Wide clamping range
- Ideal for OP 10 and OP 20

## Technical features

- Self-centering clamping
- Clamping force up to 20 kN
- Jaw width 75 mm
- Interface for zero point systems APS / WPS

## Standard equipment

Wrench, jaws, Sintergrip inserts.



Id. No.	Type
77584931	SINTEX 75 STD
77584932	SINTEX 75 ALU
77584933	SINTEX 75 HRC



## Applications / Customer Benefits

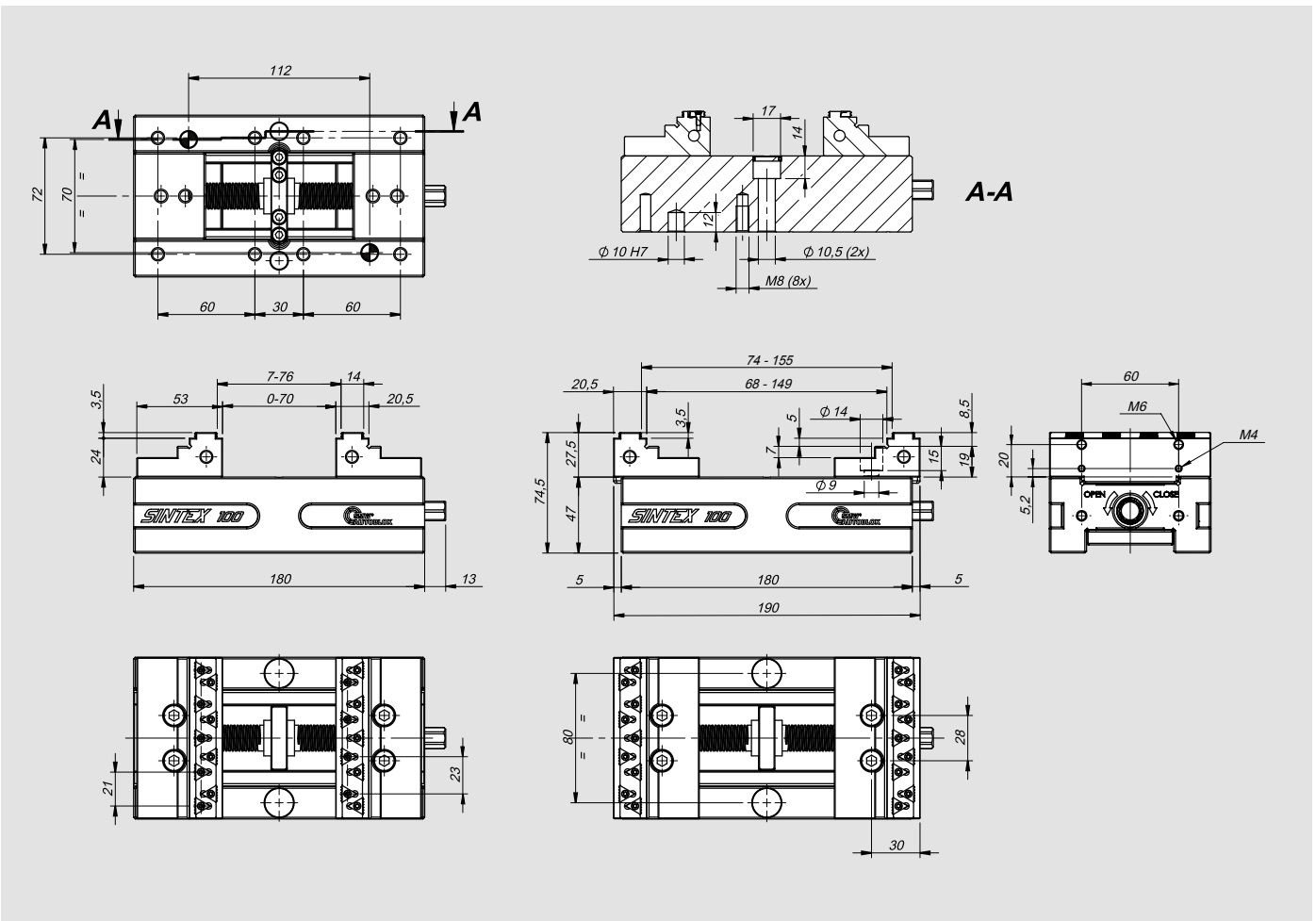
- Highly precise self-centering clamping with maximum repeatability
- Compact design for better accessibility and very large drainage slots
- Jaws with SinterGrip clamping inserts for minimum workpiece clamping depth without pre-machining
- Wide clamping range
- Ideal for OP 10 and OP 20

## Technical features

- Self-centering clamping
- Clamping force up to 25 kN
- Jaw width 100 mm
- Interface for zero point systems APS / WPS

## Standard equipment

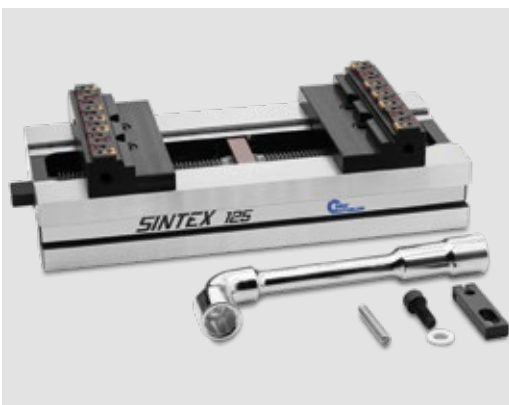
Wrench, jaws, Sintergrip inserts.



Id. No.	Type
77584911	SINTEX 100 STD
77584912	SINTEX 100 ALU
77584913	SINTEX 100 HRC

# SINTEX 125

PREMIUM



## Applications / Customer Benefits

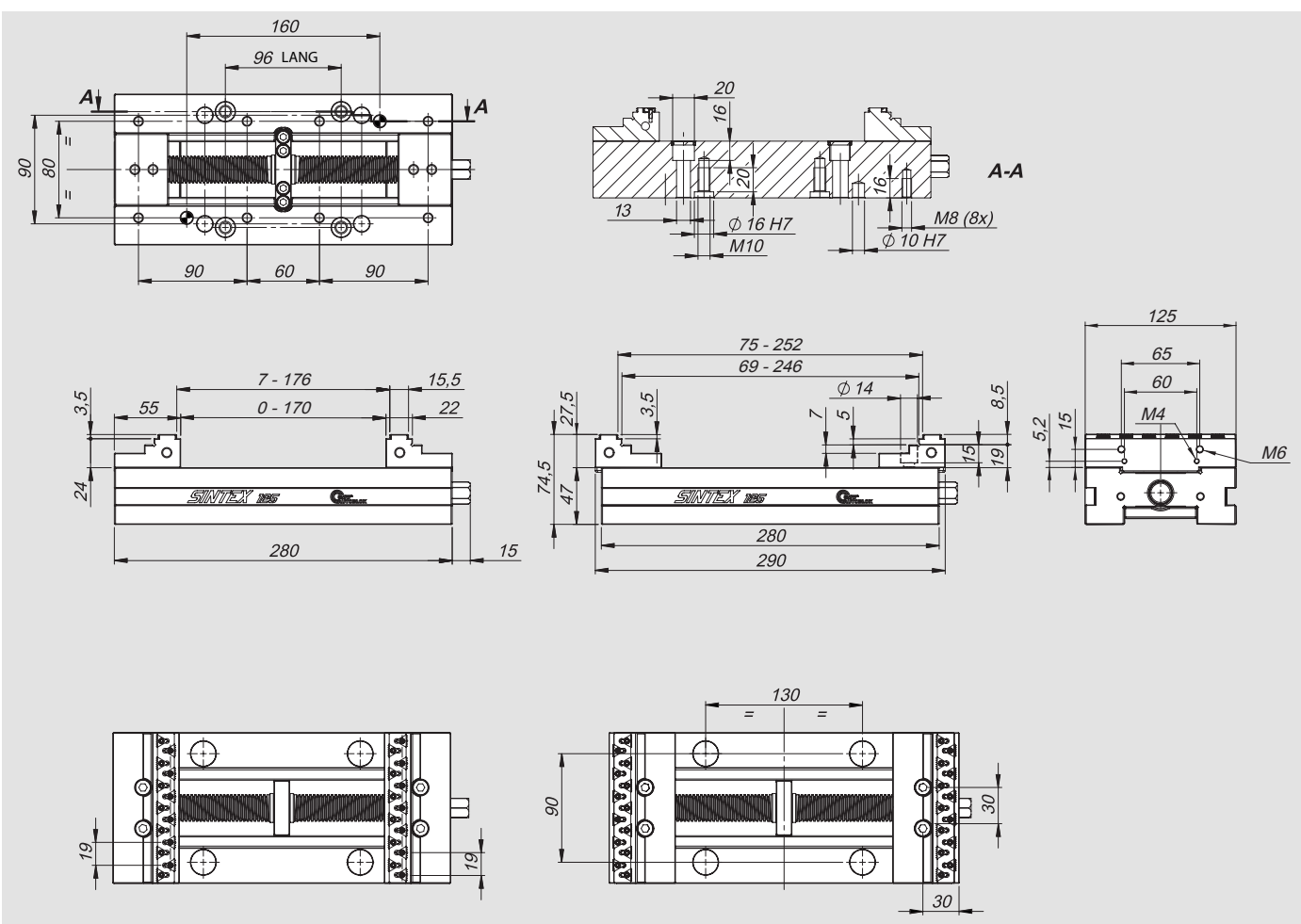
- Highly precise self-centering clamping with maximum repeatability
- Compact design for better accessibility and very large drainage slots
- Jaws with SinterGrip clamping inserts for minimum workpiece clamping depth without pre-machining
- Wide clamping range
- Ideal for OP 10 and OP 20

## Technical features

- Self-centering clamping
- Clamping force up to 30 kN
- Jaw width 125 mm
- Interface for zero point systems APS / WPS

## Standard equipment

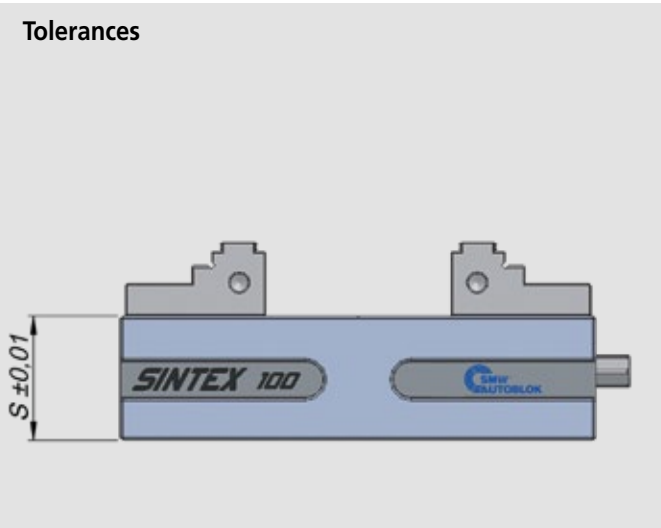
Wrench, jaws, Sintergrip inserts.



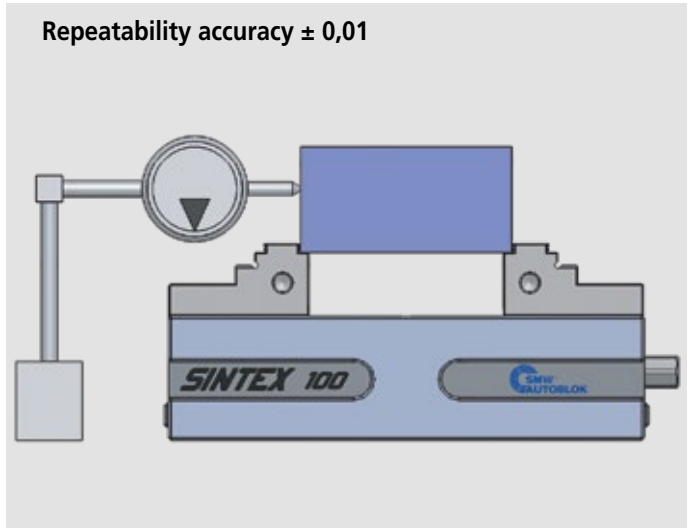
Id. No.	Type
77584961	SINTEX 125 STD
77584962	SINTEX 125 ALU
77584963	SINTEX 125 HRC

**TECHNICAL DATA**

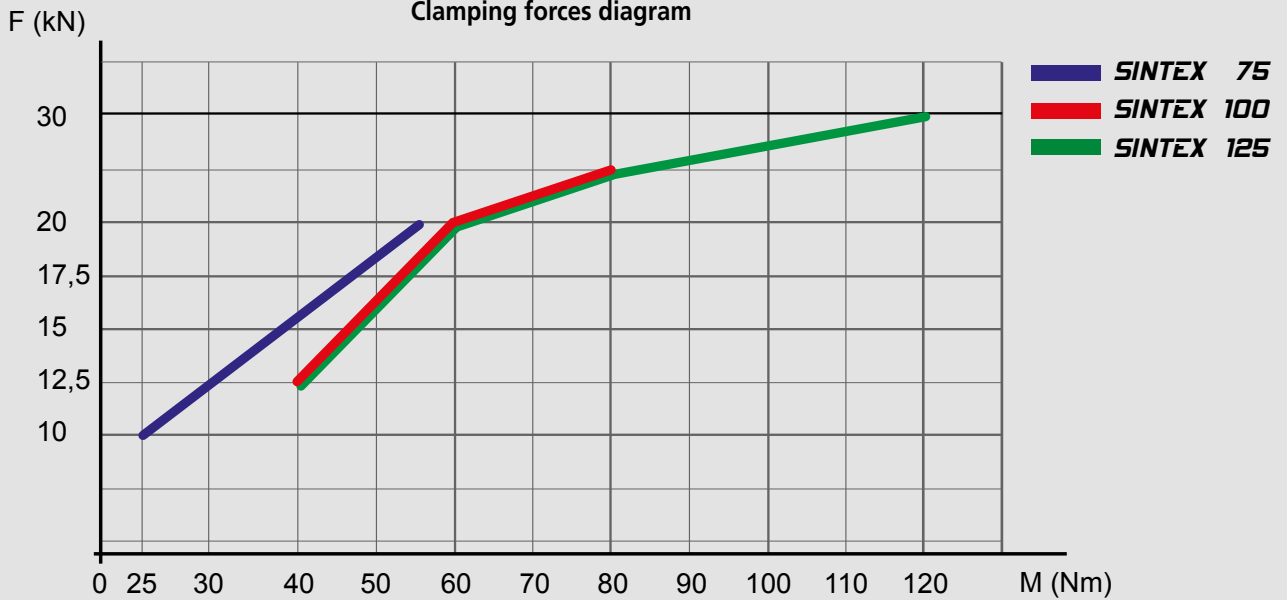
Tolerances



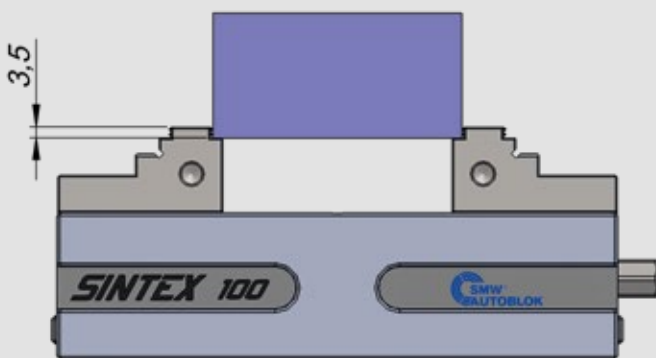
Repeatability accuracy  $\pm 0,01$



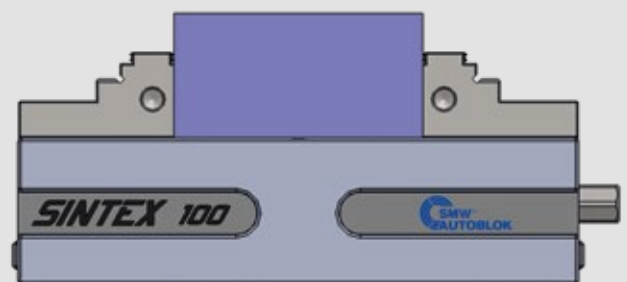
Clamping forces diagram



**Working example**



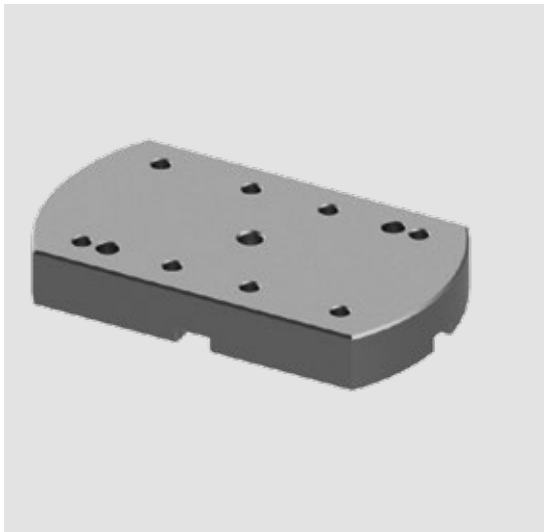
**1 OP.**



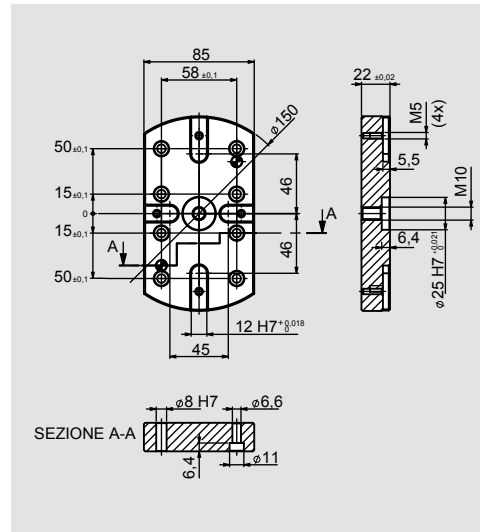
**2 OP.**



### INTERFACE PLATE SINTEX 75 for APS 140



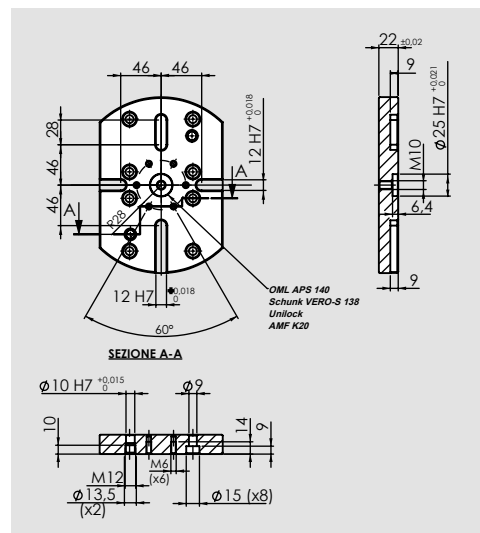
**Id. No.**  
**58492051**



### INTERFACE PLATE SINTEX 100 for APS 140 - APS 190



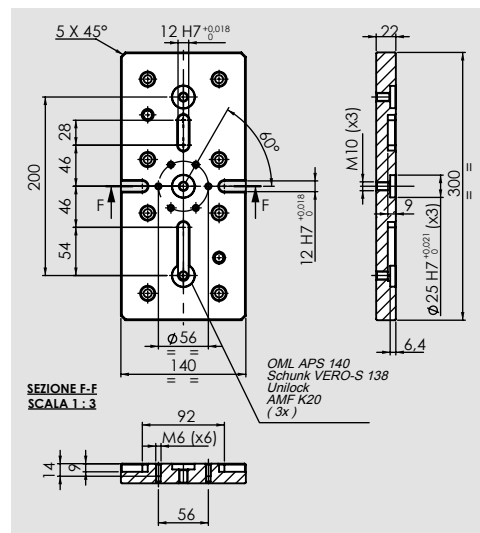
**Id. No.**  
**58492021**



### INTERFACE PLATE SINTEX 125 for APS 140 - APS 190



**Id. No.**  
**58497021**



Clamping pins APS 140



Typo A  
centering pin



Typo B  
reference pin

Application/customer benefits

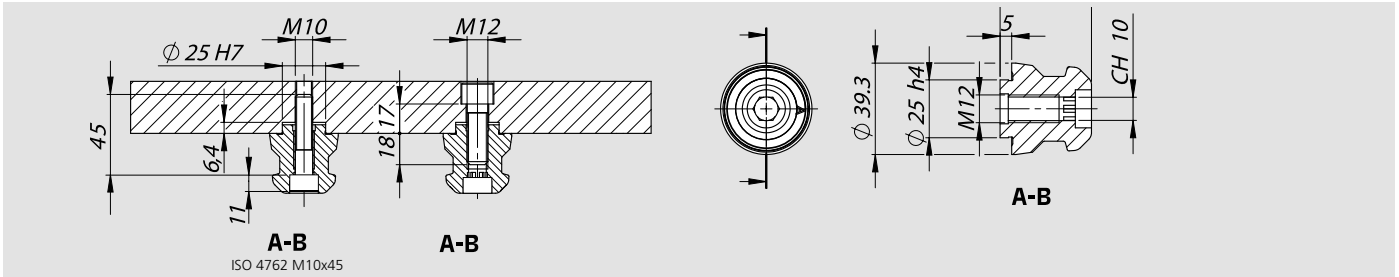
- Fixation and positioning on the clamping systems APS 140
- Wear-resistant due to an extra hard protective coating
- Large entry radii of the clamping pins for easy and safe loading

Technical features

- Centering pin Type A (Standard)
- Sword pin Type B (Positioning pin)

Standard equipment

Clamping pin with mounting screw M10x45



	Thread	Type A	Type B	Weight
Clamping pins APS 140	M12	46162355	46162356	0.3 Kg

Clamping pins APS 190



Application/customer benefits

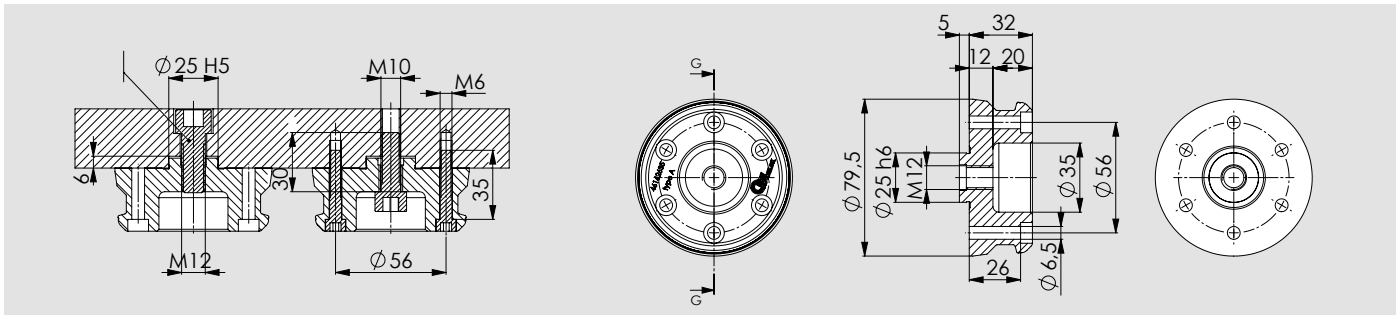
- Fixation and positioning on the clamping systems APS 190
- Large entry radii of the clamping pins for easy and safe loading

Technical features

- Centering pin Type A (Standard)

Standard equipment

Clamping pin with mounting screw M8x40 (6 pieces)



Id. No.	Type	Weight
46 16 26 35	A $\phi 25 =$ at pin APS-140 M12	0,85Kg

Working examples

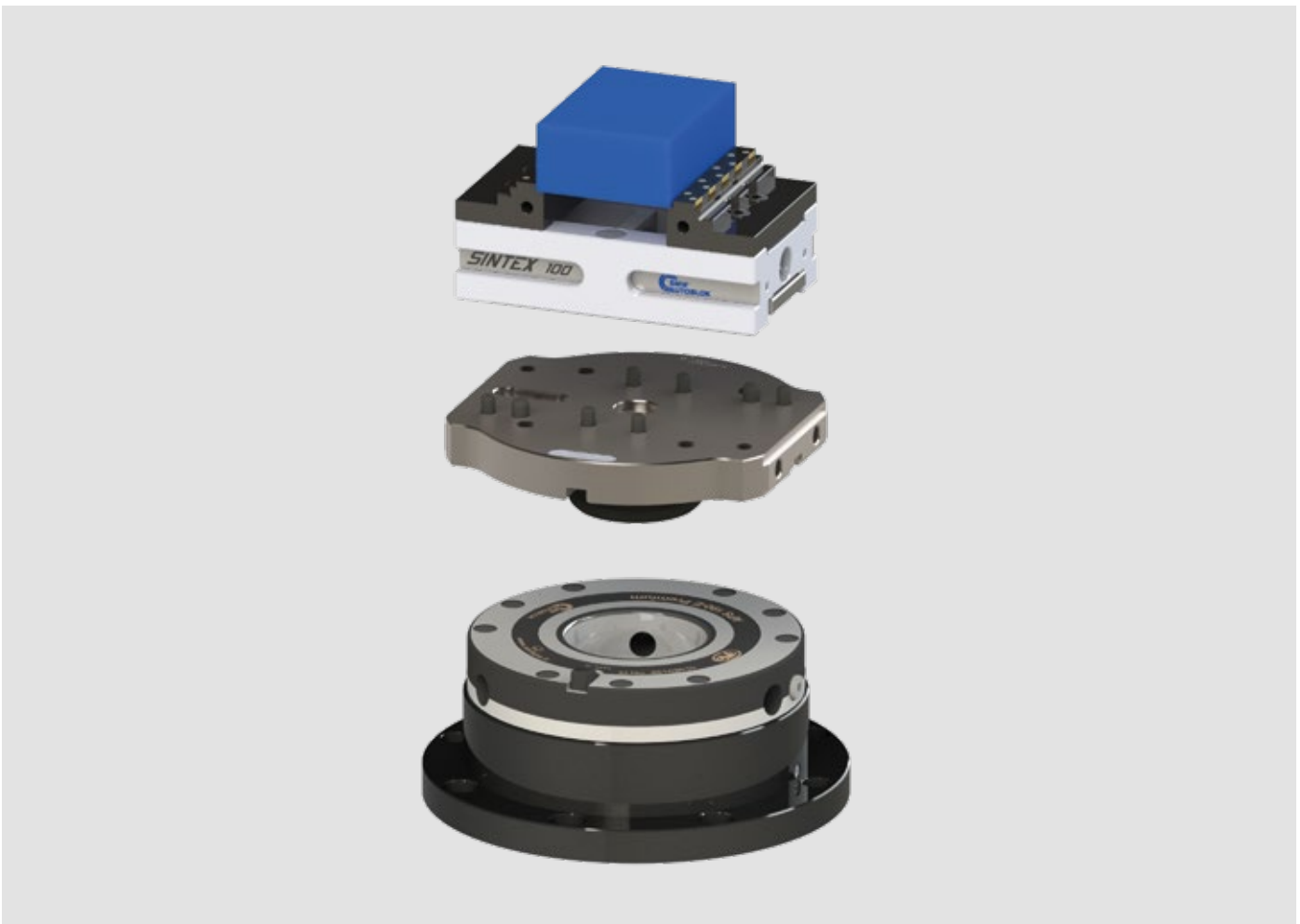


PALLET FOR AUTOMATION

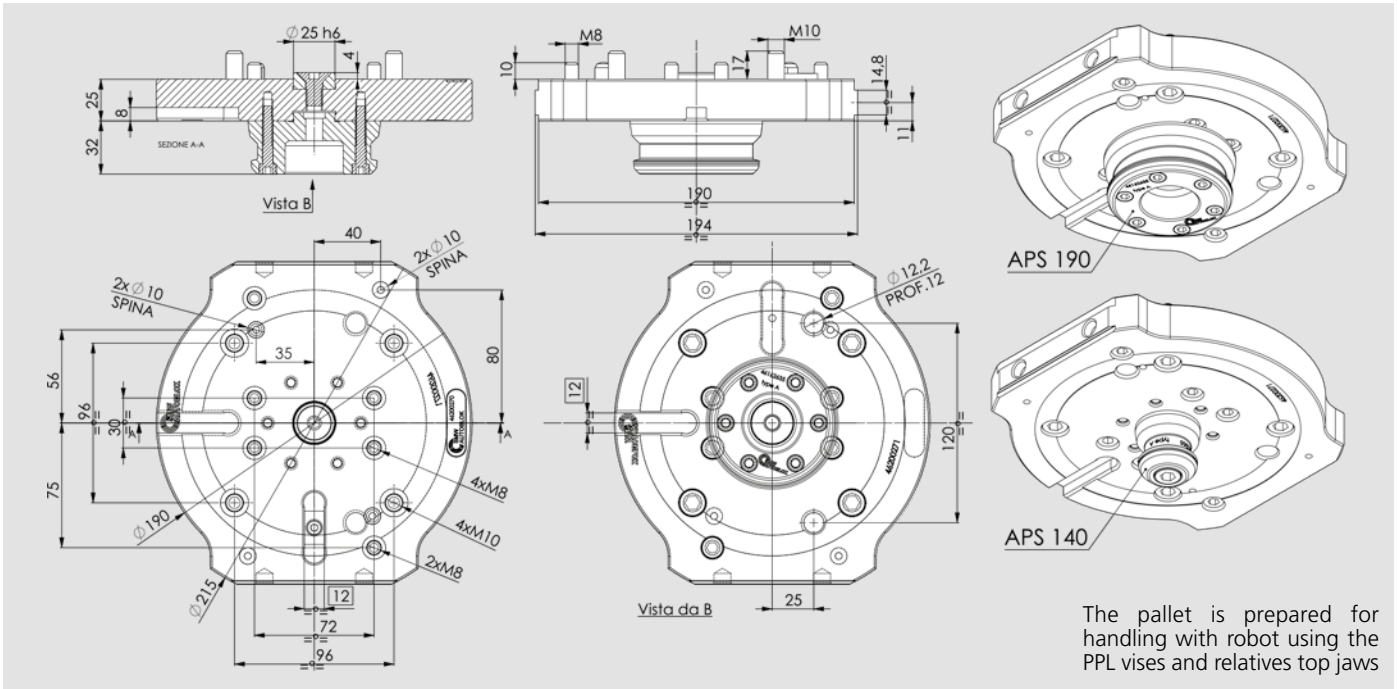


Id. n. pallet without vise	
46200275	per APS140
46200270	per APS190

### Working example

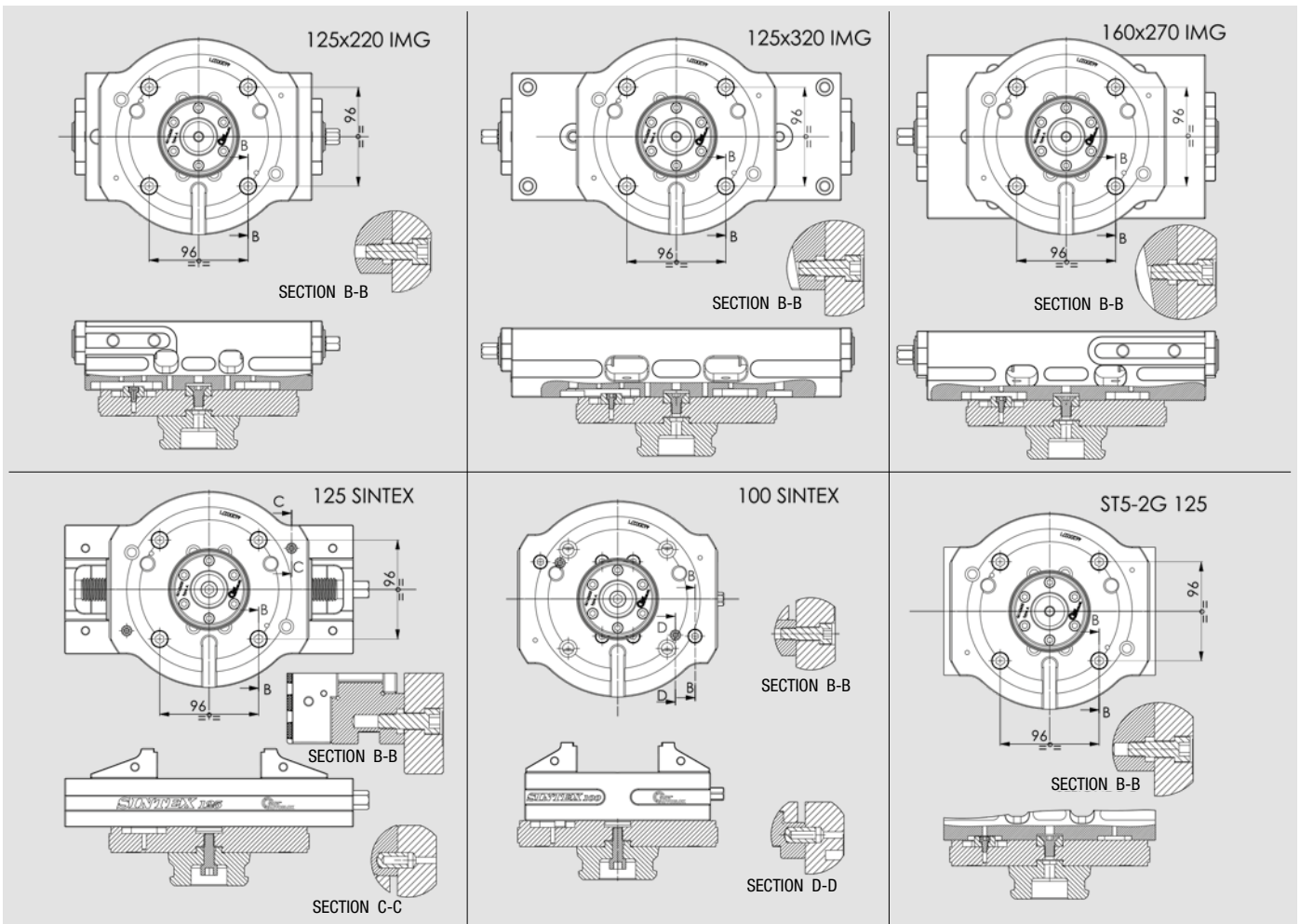


## Prepared for robot loading

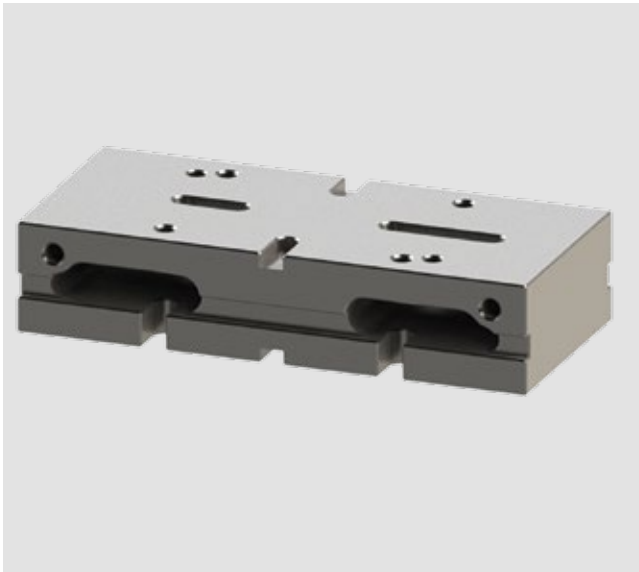


The pallet is prepared for handling with robot using the PPL vises and relatives top jaws

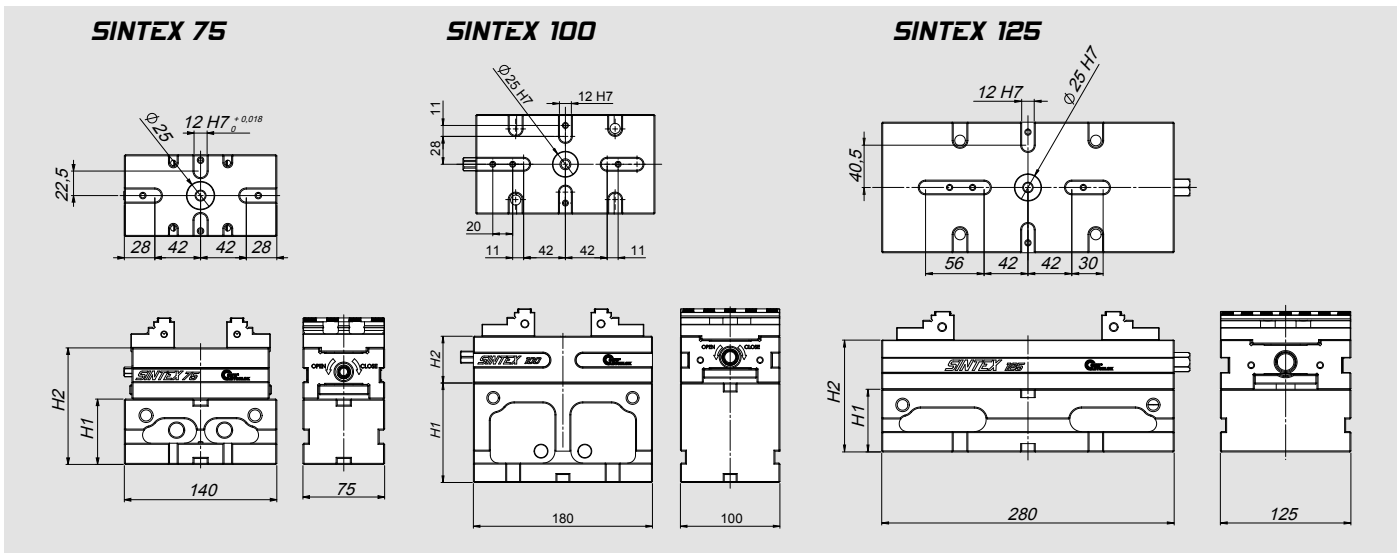
Id. n. pallet without vise	Weight	Vise model (see scheme below)		
<b>46200275</b> pallet holder vises loading robot APS140	6 Kg	100 - 125 SINTEX	125x220 - 125x320 - 160x270 IMG	125ST5-2G
<b>46200270</b> pallet holder vises loading robot APS190	6,7 Kg	100 - 125 SINTEX	125x220 - 125x320 - 160x270 IMG	125ST5-2G



#### Rises



Type	Id. No.	H1	H2	Weight																			
SINTEX 75	<b>58492141</b>	60	107	6 Kg																			
SINTEX 75	<b>58492151</b>	100	9 Kg	SINTEX 100	<b>58492111</b>	60	107	6 Kg	SINTEX 100	<b>58492121</b>	100	147	9 Kg	SINTEX 125	<b>58497111</b>	60	107	14 Kg	SINTEX 125	<b>58497121</b>	100	147	18 Kg
SINTEX 100	<b>58492111</b>	60	107	6 Kg																			
SINTEX 100	<b>58492121</b>	100	147	9 Kg																			
SINTEX 125	<b>58497111</b>	60	107	14 Kg																			
SINTEX 125	<b>58497121</b>	100	147	18 Kg																			

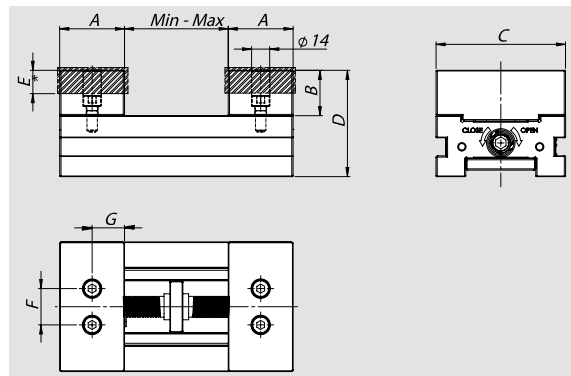
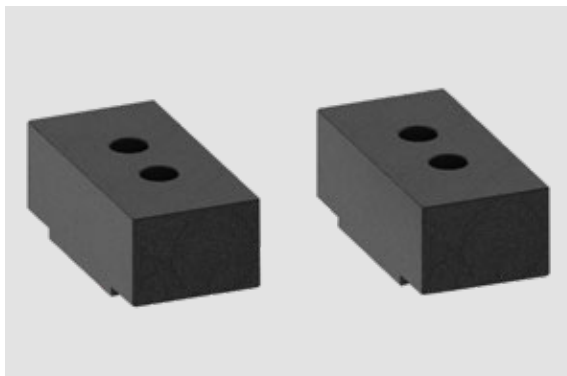


#### Working examples



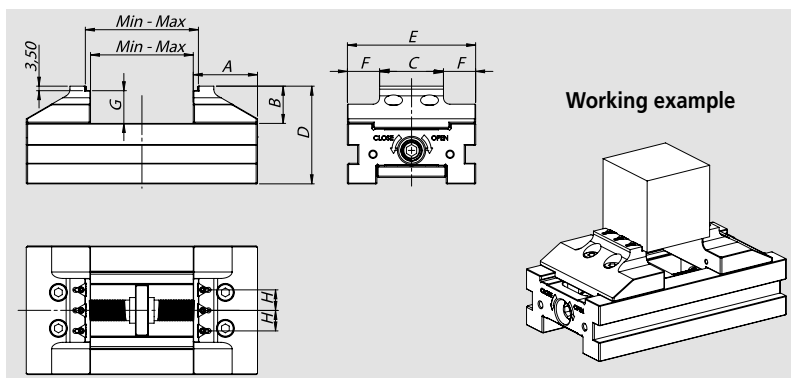
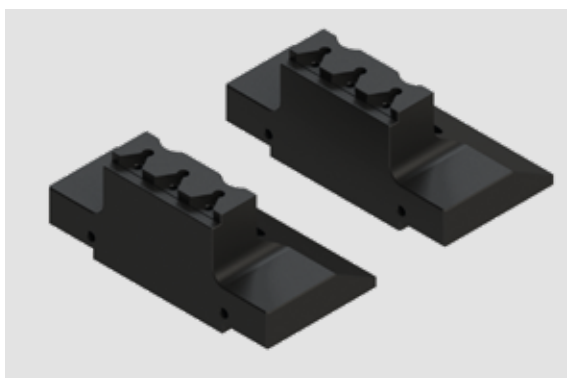


**Pair of soft steel-ALU jaws**



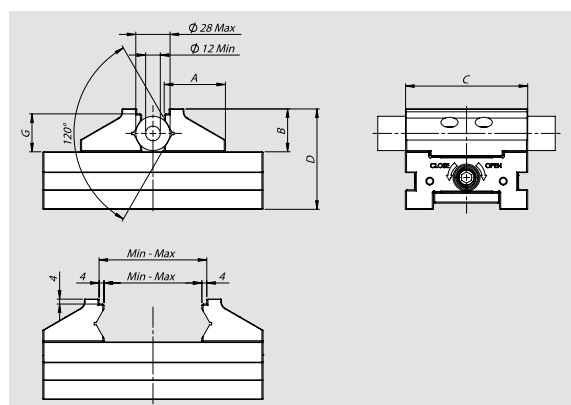
Type	Steel	Alluminium	A	B	C	D	E	F	G	Min.	Max
<b>SINTEX 100</b>	58 49 16 29	58 49 16 19	50	35	100	82	18	28	25	0	77
<b>SINTEX 125</b>	58 49 66 29	58 49 66 19	65	35	125	82	18	34	25	0	177

**Pair of reduced jaws**



Type	Id. No.	A	B	C	D	E	F	G	H	Min.	Max
<b>SINTEX 100</b>	58 49 15 19	50	29	50	74	100	25	25,5	16	0 - 7	78 - 85
<b>SINTEX 125</b>	58 49 65 19	65	34	55	81	125	35	29,5	18	0 - 7	178 - 185

**Pair of V jaws**



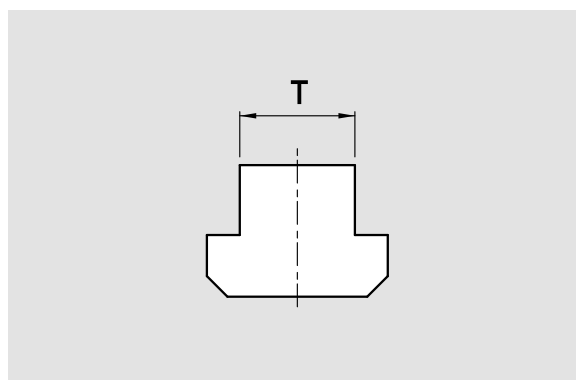
Type	Id. No.	A	B	C	D	G	Min.	Max
<b>SINTEX 100</b>	58 49 14 19	50	35	100	82	31	0 - 8	78 - 85
<b>SINTEX 125</b>	58 49 64 19	65	35	125	82	31	0 - 8	178 - 185

#### Key for APS for single use



Type	Id. No.
APS 140 / 190	46162333

#### Pair of Clamps



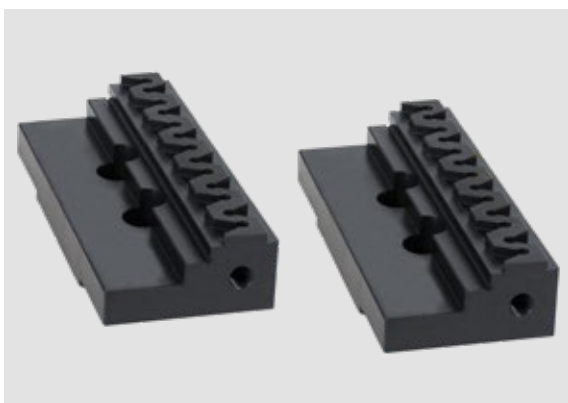
Type	Id. No.					
	mm 12	mm 14	mm 16	mm 18	mm 20	mm 22
SINTEX 75 - 100 - 125	58 01 27 92	58 01 27 93	58 01 27 94	58 01 27 95	58 01 27 96	58 01 27 97

#### Torque wrench



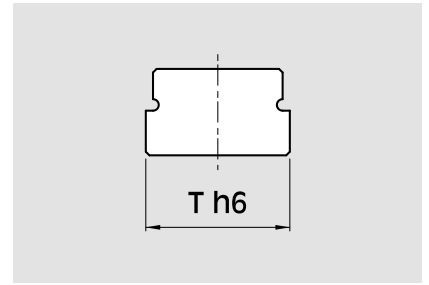
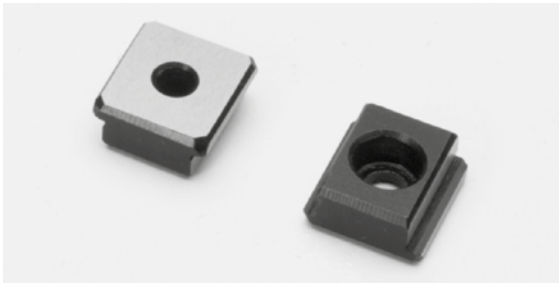
	SINTEX 75	SINTEX 100	SINTEX 125
Id. No.	51 50 10 25	51 50 10 08	51 50 10 09

#### Pair of jaws PREMIUM



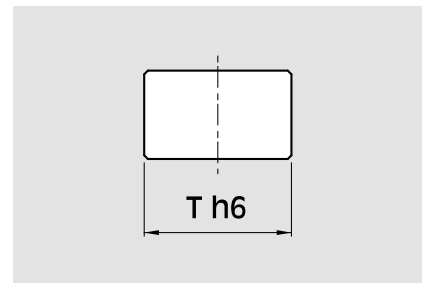
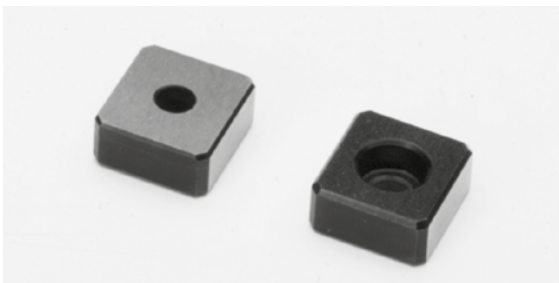
	SINTEX 75	SINTEX 100	SINTEX 125
Id. No.	58 49 12 49	58 49 12 19	58 49 62 19

**Pair of special positioning keys**



Type	Id. No.					
	mm 12 - h6	mm 14 - h6	mm 16 - h6	mm 18 - h6	mm 20 - h6	mm 22 - h6
<b>SINTEX 75 - 100 - 125</b>	-	<b>58 01 15 93</b>	<b>58 01 15 94</b>	<b>58 01 15 95</b>	<b>58 01 15 96</b>	<b>58 01 15 97</b>

**Pair of standard positioning keys**



	SINTEX 75 - 100 - 125
<b>Id. No.</b>	<b>58 01 15 92</b>

**Workstop**



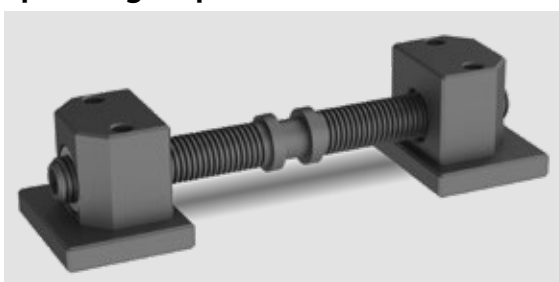
	SINTEX 75 - 100 - 125
<b>Id. No.</b>	<b>58 31 50 20</b>

**Key**



	SINTEX 75	SINTEX 100	SINTEX 125
<b>Id. No.</b>	<b>58 49 19 50</b>	<b>58 49 19 20</b>	<b>58 49 69 20</b>

**Spindle group**



	SINTEX 75	SINTEX 100	SINTEX 125
<b>Id. No.</b>	<b>58 49 90 30</b>	<b>58 49 90 10</b>	<b>58 49 90 20</b>

### SinterGrip

Our new patented product SinterGrip is born to satisfy the current need to clamp a workpiece for very few millimeters (with SinterGrip 3,5 mm clamping surface), and this for the following reasons:

- 1) In order to machine the workpiece completely in a single operation (especially for 5 axis machines);
  - 2) In order to save money for the raw materials, especially when they have a big impact on the price (aluminum, titanium, etc.).
- Indirectly to these reasons, and in order to improve the performance of the machine tool and the tools

**higher cutting speed + higher feed rate =  
bigger volume of metal removed = less time to machine the workpiece,**  
the market requires safe clamping, which could at the same time possibly avoid the deformations of the piece itself.

	Id. No.	Description
	58 45 01 19	Set of 10 SinterGrip inserts <b>STD</b> for steel
	58 45 01 29	set of 10 SinterGrip inserts <b>HRC</b> for hardened steel / titanium until 50-54 HRC
	58 45 01 39	Set of 10 SinterGrip inserts for <b>ALU</b>
	58 45 02 19	Kit 10VTx30 for inserts SINTERGRIP
	58 45 05 19	Kit 10 protection inserts in aluminum



